

Operations Manual

Vantage SL - Split Lid Grill
Model #: SL1577



PROLUXE
WWW.PROLUXE.COM

Congratulations on your selection of the Vantage SL Compact Split Lid Grill. Proluxe is a leading manufacturer of food preparation and cooking equipment designed for the most demanding commercial kitchens. Proluxe equipment is a result of the highest quality engineering and time-tested design.

This manual includes installation, operation, and maintenance procedures for your new split lid grill. Please read this manual carefully and keep it with your machine for proper operation and lasting service.

Electrical:
120V/50-60Hz/220W/18.3 Amps
1 phase

Also available; specify when ordering:

- Voltage: 120/208/220
- Amps: 18.3/10
- Watts: 2200/2200/2800

Includes: 72" cord and 6-30P NEMA approved plug.

Controlled heating zones: 3

Shipping Weight:
78lbs. (35kg)

GETTING STARTED

Please read carefully before attempting to use this appliance.

1. Place in location where it will be used allowing for clearances per the dimensions indicated. Allow 2" minimum clearance between adjacent equipment and/or wall areas.
2. Plug into proper 3 prong wall outlet. If other appliances are connected to the same circuit make sure the total load does not exceed a maximum ampacity of the circuit. Electrical information is as follows:
3. Press the power button, the green light above will illuminate when powered on. The display flashes and shows left preset timer during warm-up. Pre-heat time will be 40-50 minutes. When the set point is reached, the display stops flashing and beeps 3 times.
4. Simply place product on either side of the grill, close lid and press the desired preset time cycle 10 or 20 seconds. After the time cycle is finished press it again to reset the time cycle.

INTERNATIONAL SYMBOLS

Symboles internationaux



Power Off
éteindre



Power On
allumer



Hot Surface
surface chaude



Risk of Electrical Shock
Risque de choc électrique



Protective Earth Terminal
Borne de terre de protection



Caution - Warning
chaud - avertissement

SAFETY SUMMARY



Warning

To reduce the risk of electrical shock, do not remove or open cover. No user-serviceable parts inside. Refer servicing to qualified personnel.

Avertissement

Pour réduire le risque de choc électrique, ne pas retirer ou couvercle ouvert Aucune pièce réparable par l'utilisateur, reportez-vous à du personnel qualifié.



Warning

In case of power cord damage, do not attempt to repair or replace the power cord. Please contact the manufacturer or the local distributor.

Avertissement

Pour une protection continue contre l'incendie et de choc électrique, remplacer avec le même type et calibre du fusible. Mis fusible supplémentaire nominale max 3A, 120 Vac.



Warning

For continued protection against fire and electric shock, replace with the same type and rating fuse. Listed Supplemental Fuse rated max 3A, 120Vac.

Avertissement

Pour une protection continue contre l'incendie et de choc électrique, remplacer avec le même type et calibre du fusible. Mis fusible supplémentaire nominale max 3A, 120 Vac.



Caution Hot

Avoid touching hot surfaces while operating the machine.

Attention à chaud

Évitez de toucher les surfaces chaudes lorsque vous utilisez la machine.



Caution

When servicing or cleaning the machine, make sure that the power cord is removed from the wall socket.

During normal operation, the base of the machine must be installed or placed above the wall socket.

Avertissement

Lors de l'entretien ou du nettoyage de la machine, assurez-vous que le cordon d'alimentation est débranché de la prise murale.

TEMPERATURE/TIMER SETTINGS

How to Find Set Temperature

To find the temperature of upper platens:
Press and hold the TEMP button and the arrow up (↑) button at the same time.

To find the temperature of bottom platens:
Press and hold the TEMP button and the arrow down (↓) button at the same time.

Adjusting the Set Temperature

1. Press and hold the TEMP button and the arrow up (↑) button at the same time for 15 seconds.
2. The current temperature with display on the right digital display screen only.
3. Using the up (↑) and down (↓) adjust the temperature to your desired setting.
4. Once your desired temperature is set, push the TEMP button to return.

Adjusting the Set Time

1. Press the TEMP button first and then select the desired timer button and hold for 5 seconds.
2. The current temperature with display on the right digital display screen only.
3. Using the up (↑) and down (↓) adjust the timer to your desired setting.
4. Once your desired temperature is set, push the TEMP button to return.

Note: When adjusting the timer settings, the right set of buttons control the left side. Your left side timer will automatically set to your right control settings. If you desire a separate left timer you can manually adjust

the left side timer without affecting the right timer.

CLEAN CYCLE

Start Cycle

To start a clean cycle, push CLEAN button once so the CLEAN LED light is turned on. All preset LED's are turned off, and the temperature set point is changed to the clean set point of 275°F. This also initiates the cool down to clean set point condition as well the display starts flashing until the clean set point is reached.

Stop Cycle

To stop the clean cycle, simply press the CLEAN button once to deactivate the clean cycle. The CLEAN LED is turned off, the preset LED's are restored, the temperature set point is changed to the main set point. Again, the warm-up condition is initiated and the display flashes until the cook set point is reached.

Change Clean Temp

275°F is the factory default temp for the CLEAN cycle. To change the CLEAN cycle temp, simultaneously hold down the TEMP and CLEAN buttons for 15 seconds. The current temp setting will display on the right digital display only. Using the up or down arrows to adjust to the desired temp.

PREVENTATIVE MAINTENANCE

Proluxe machines are relatively maintenance free. For a long lifespan, the following

preventative maintenance should be followed:

Daily Care:

1. Platens: Turn your machine off and allow to cool down before attempting to clean. These platens should only be cleaned with mild soap and warm water then wiped off with a clean, soft cloth or soft sponge.

2. Exterior surfaces: Wipe daily with mild soap and warm water.

DO NOT use ice or cold water to cool the unit down. This can cause platens to warp.

Service Problems:

Contact our factory at (800) 624-6717 (U.S. only) or approved service agency. When contacting the factory for information, parts or service instructions, please provide the serial number of the machine be provided. This number can be found on the serial plate located on the rear of the machine.

Vantage SL Troubleshoot Guide - Model #: SL1577

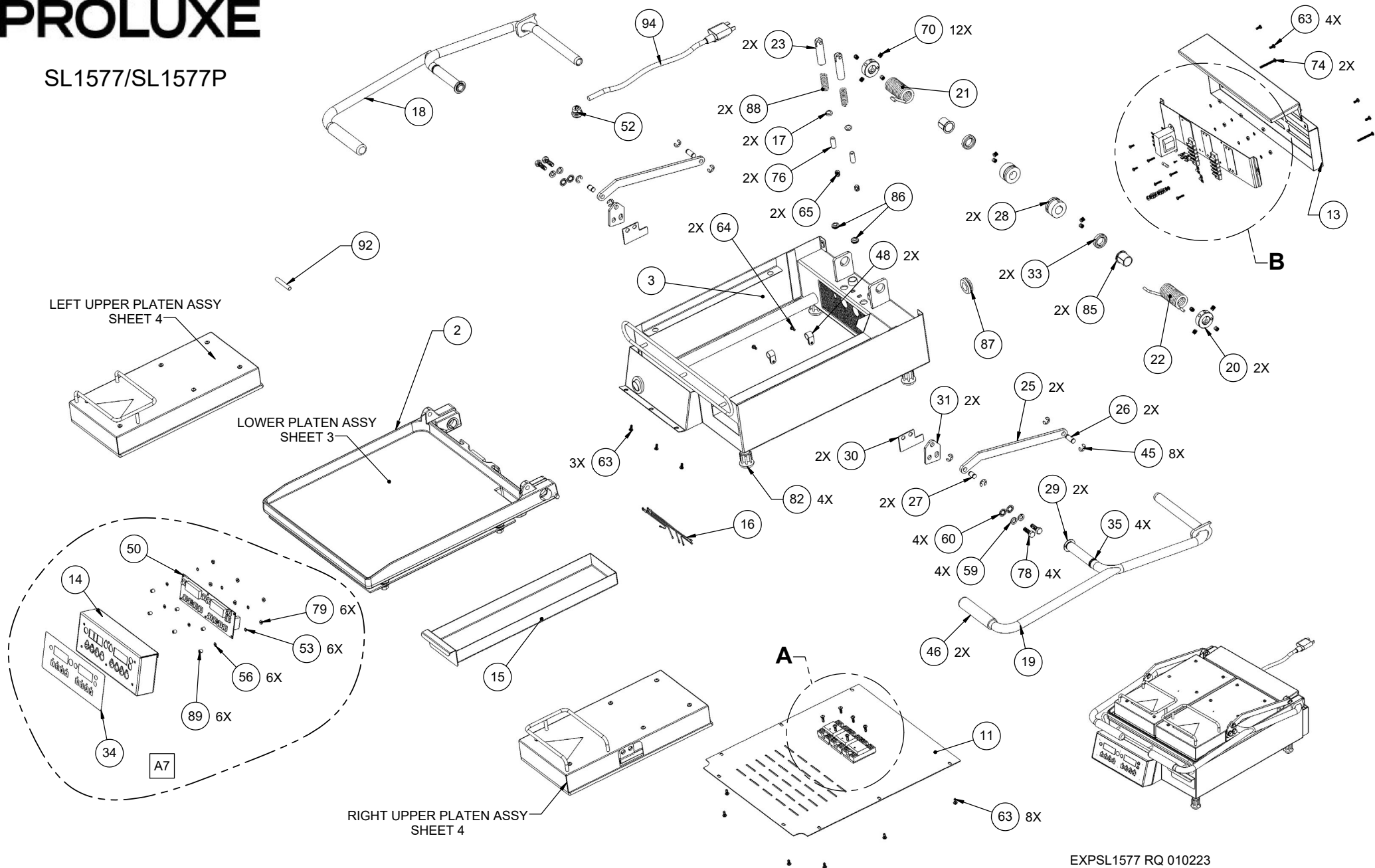
Problem	Cause	Action	Ref #
Power button on digital controller face is depressed but doesn't turn on.	1. Power cord is not plugged in.	1. Plug the power cord into wall receptacle and power button.	----
	2. Circuit breaker is tripped off in the site's breaker box.	2. Reset circuit breaker that the grill is plugged into. Depress Power Button to turn on.	----
	3. Transformer has taken an electrical surge and is damaged.	3. Replace Transformer after you check secondary side of transformer. If working properly, you should receive 12vdc.	18
	4. Check voltage on the secondary side of the Transformer. If you read 12VDC then you are receiving voltage to the controller.	4. Replace controller. Controller should be on once the power button is depressed.	A8
	5. Possible blown fuse.	5. Replace fuse.	98
Digital controller's LED's are scrambled or randomly erratic. If when turning on, the display will first go to segment check	1. Possibly a component on the Digital controller is damaged.	1. Replace digital controller.	A8
	2. Control needs to reset.	2. While unit is on unplug unit, wait for 1 min. Then plug machine on again and depress the power button.	----
Digital controller is constantly beeping. No heat on either on left, right, upper, or lower platen.	Sensor in one of two zones lost it's continuity. Depress TEMP. While depressing TEMP depress either up or down arrow to locate error message PROB (zone 1, lower platen, zone 2 left upper platen, zone 3, right upper platen.) If occurred when depressing the up arrow indicates either the left or right platen has the open sensor or Probe.	Disconnect probe and check for continuity (by using Ohm Meter) and replace. Do not cut and splice new sensor. Install new 2000 ohm RTD sensor to underside of the platen and reconnect to controller. Upper left and right sensor for replacement on upper platens, lower platen sensor for replacement for lower platen.	22 46
Digital display shows	Sensor lost it's continuity as shown	Disconnect prob that is open (no	41

PROB. No heat on any platen.	on a multi-meter.	continuity as shown on a multi-meter. Must replace sensor (RTD). Do not cut and splice new sensor. Install new 2000 ohm RTD sensor to under side of heat platen and reconnect to the controller.	
Digital controller beeping and is overheating.	The mechanical relay on the switched side is not opening to regulate temperature. Hold TEMP button then depress either the down or up arrow (zone 1, lower platen, zone 2, left upper platen and zone 3, right upper platen.) RLY will display on problem zone indicating the damage.	Replace the mechanical relay.	15
Either platen is not heating but the digital controller is on and appears to be functioning.	If the mechanical relay(s) on the coil side are receiving 12vdc indicates the controller is functioning properly. If there is no voltage on the switching side of the relay to the heaters, the relay is not working properly.	Replace the mechanical relay.	15
Beeper is not functioning.	Beeper has failed.	Replace control board.	A8
One of the three heater platens not close to set point.	The offset function in the controller's setting needs to be adjusted to achieve proper shade of toast.	Call (800) 624-6717 for instructions.	----
One heating zone is not reaching setpoint and another heater is overheating.	Sensors maybe crossed.	Make sure each sensor is connected to its prospective position on the terminal block and back to the controller.	----
Setpoint is reached but slightly off in temperature.	Offset may need to be calibrated and adjusted.	Call (800) 624-6717 for instructions.	----
Heater platen is overheating.	<ol style="list-style-type: none"> 1. The mechanical Relay may be stuck in the closed position (zone 1, lower platen #1 labeled on this relay, zone 2, left upper and zone 3, right upper). 2. If you are receiving 12vdc on the coil of the relay, the controller is properly functioning. 	Use an Ohm meter for a continuity check must check at the cold pins of the heater (where the heater wire is brazed at the cold pin. This will eliminate any other failure before the heater element validating the loss off continuity at the source the heater element.	15

Upper heater not coming down parallel to the lower platen.	Parallel lever not attached either in the rear out on the upper heater platen. Check to see if parallel leveler is connected on both sides. The retaining clip attached to pin may have come off.	Reconnect the pin and the retaining E-Clip.	25
Upper platen falling down or lost tension.	The springs have lost some tension.	Remove rear panel and adjust the retaining collars on shaft by winding the spring tighter. There are multiple set screws that need to be loosened in order to wind the spring tighter. Once proper tension is achieved, tighten all set screws to prevent tension loss.	----

PROLUXE

SL1577/SL1577P



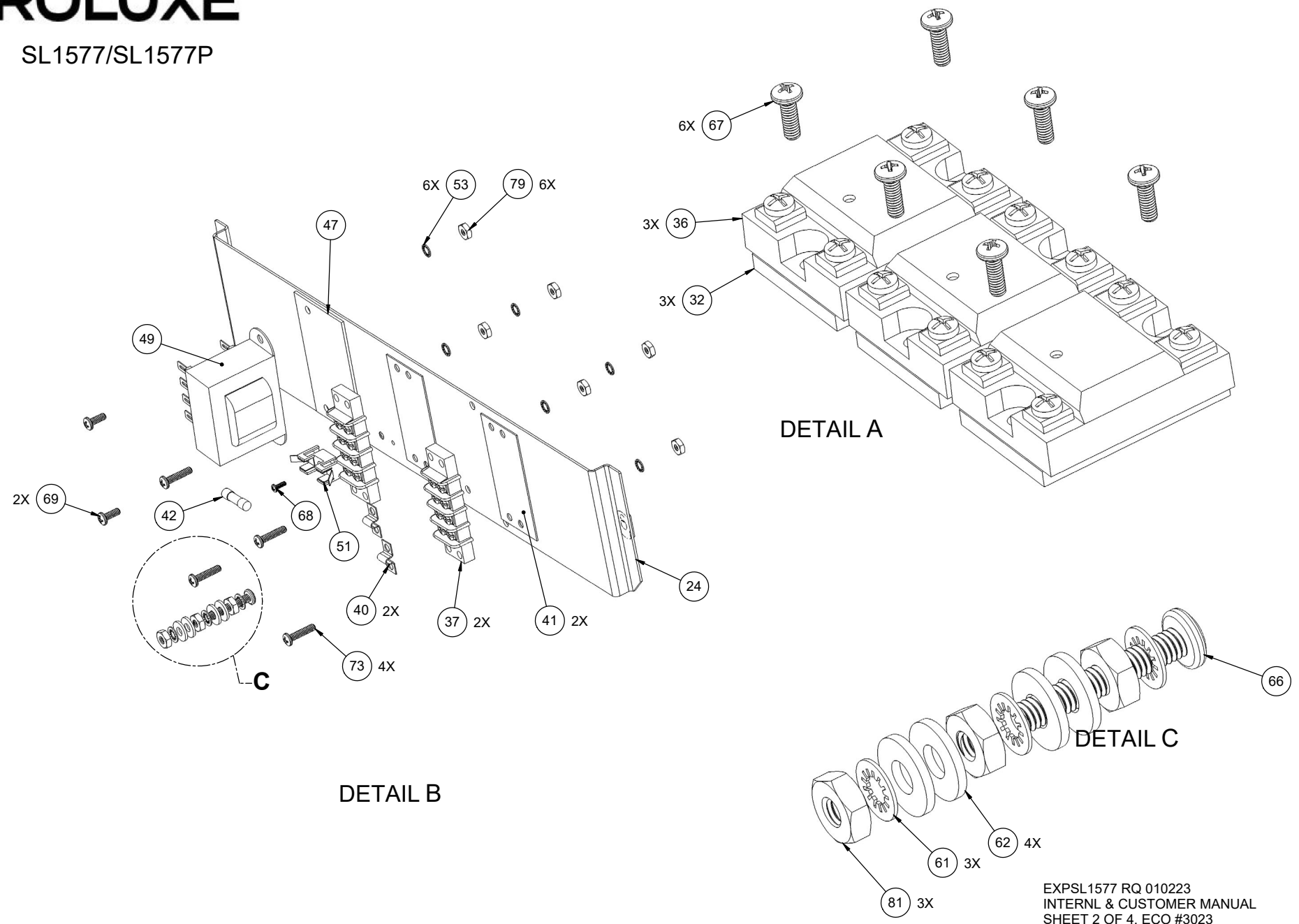
LEFT UPPER PLATEN ASSY
SHEET 4

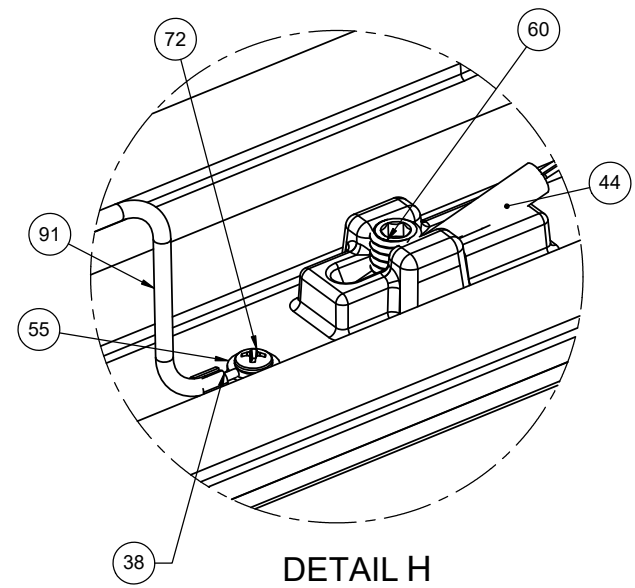
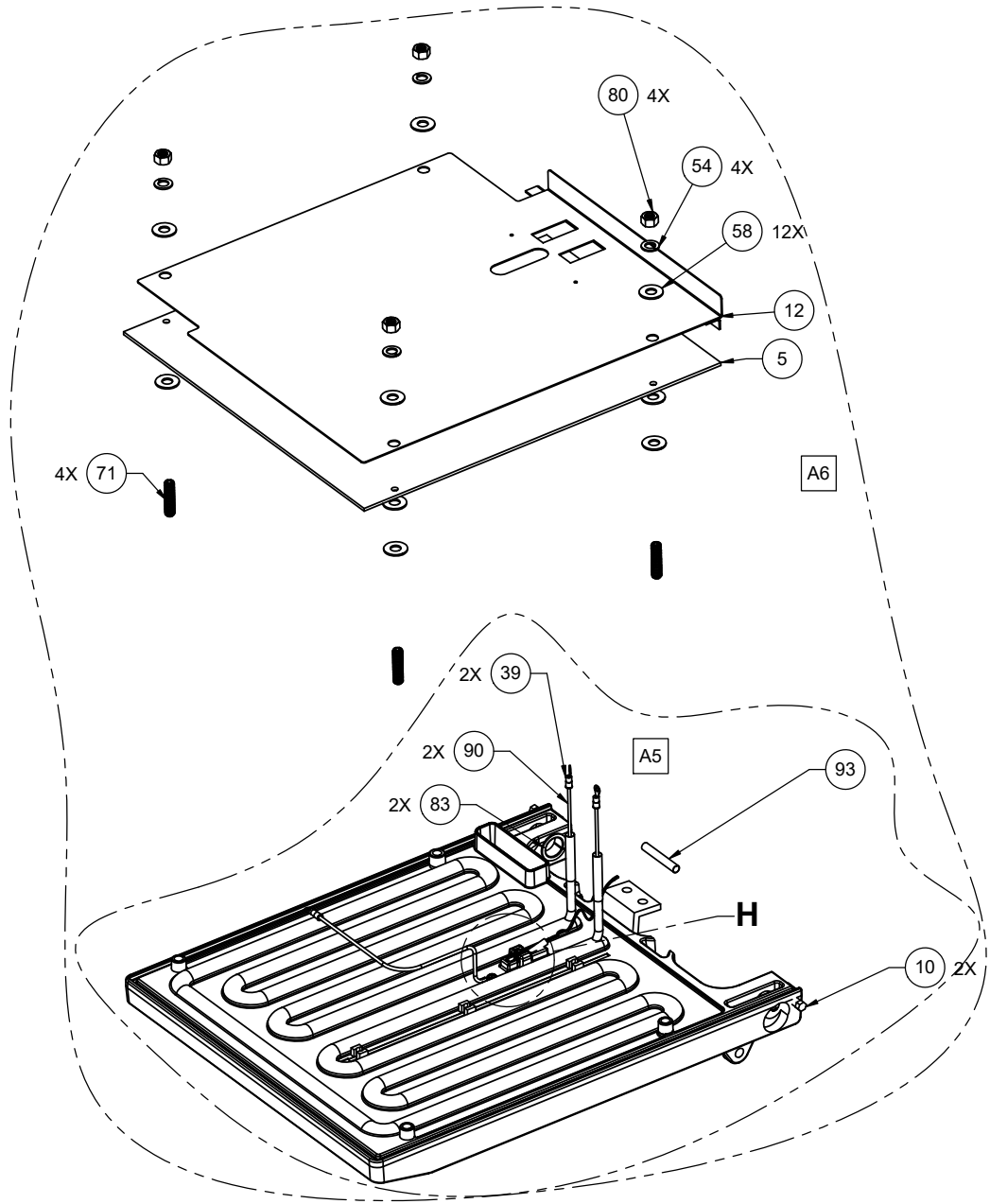
LOWER PLATEN ASSY
SHEET 3

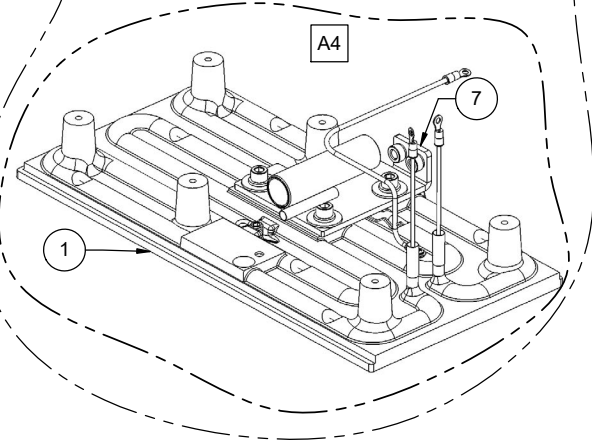
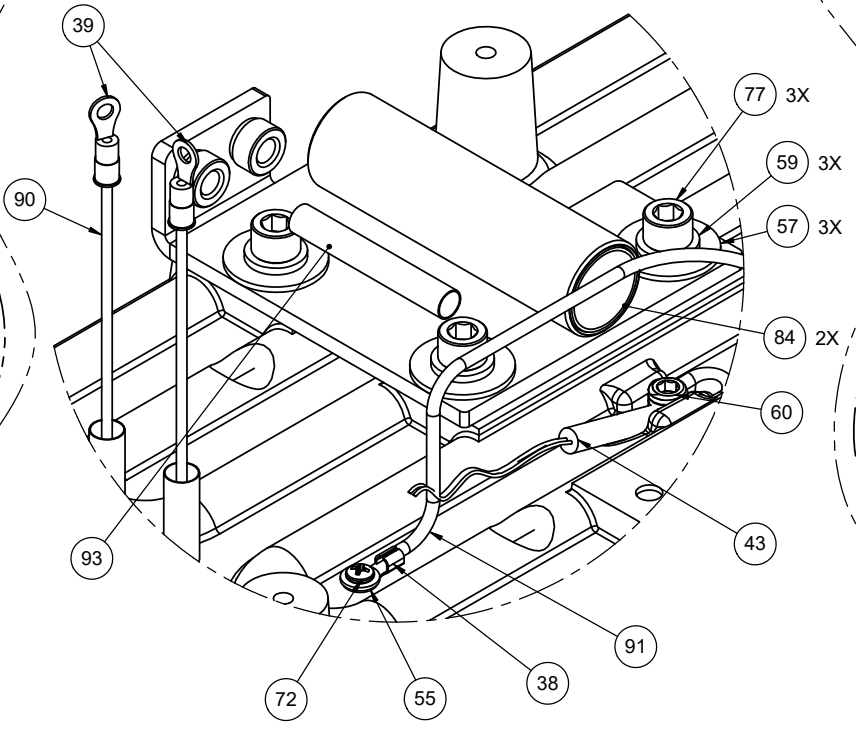
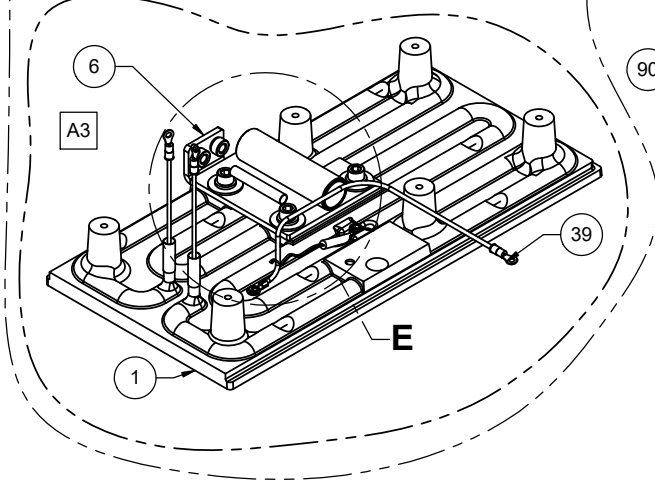
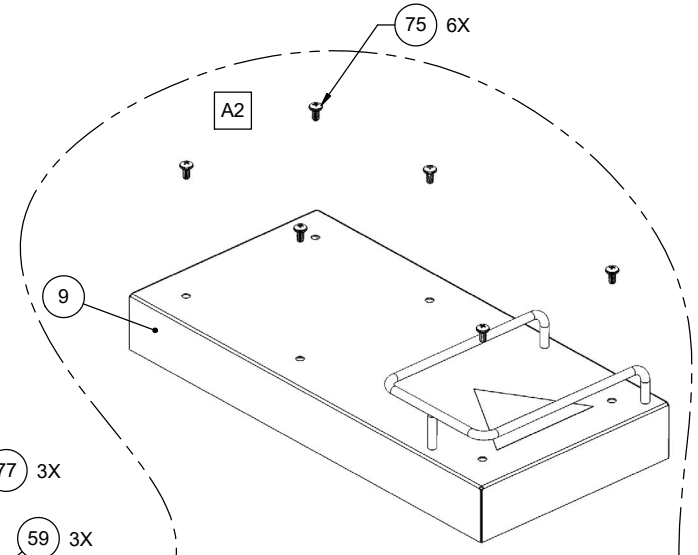
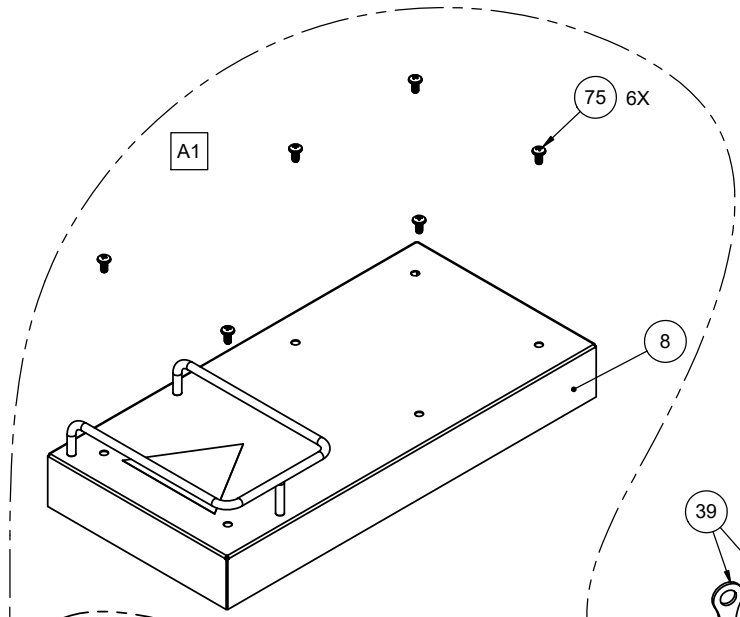
RIGHT UPPER PLATEN ASSY
SHEET 4

PROLUXE

SL1577/SL1577P







DETAIL E

PARTS LIST FOR SL1577

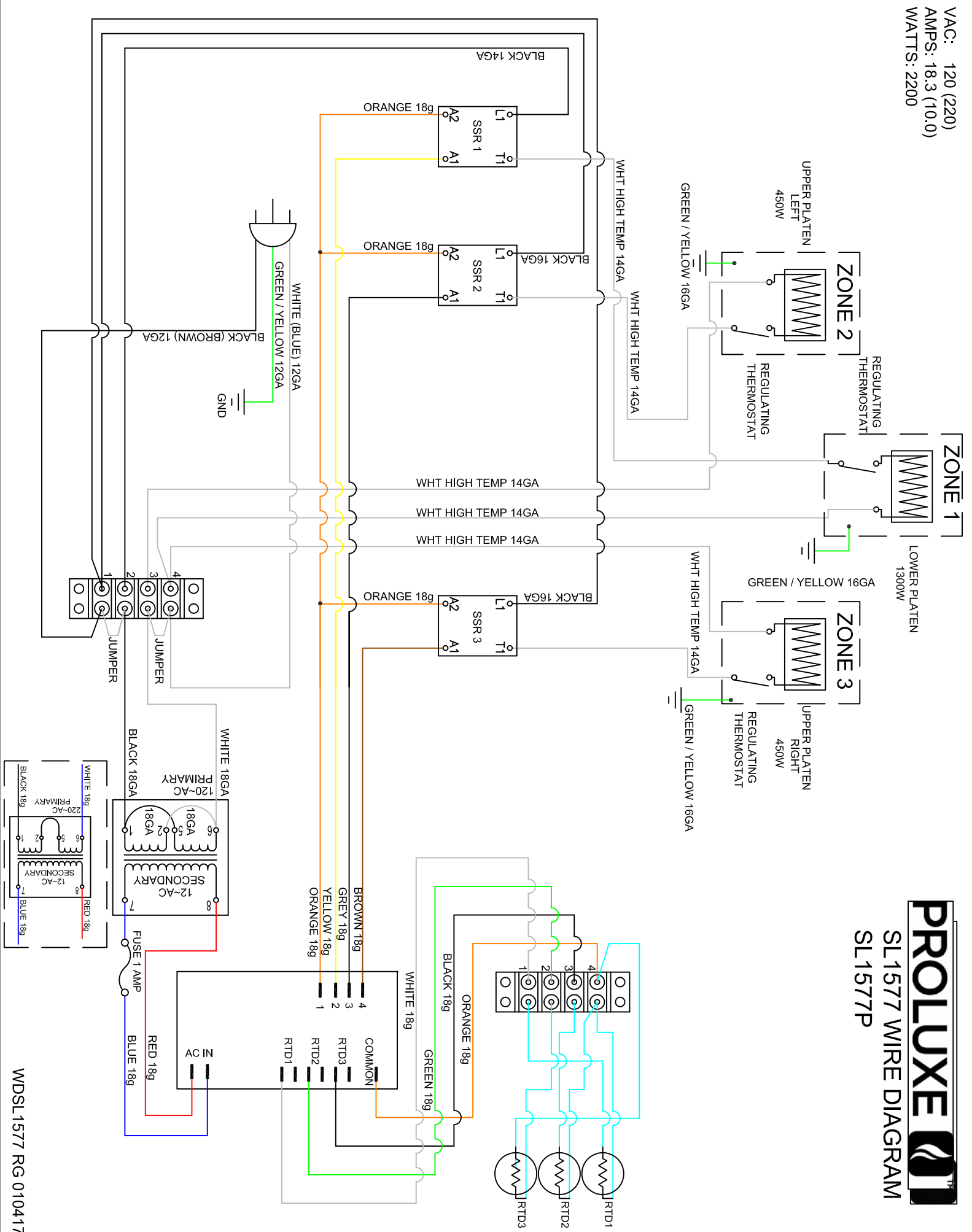
ITEM NO.	DESCRIPTION	SL1577A 120V	SL1577CEC 220V	SL1577E 208V	SL1577C 220V	SL1577PA 120V	SL1577PCEC 220V	SL1577PE 208V	QTY.
1	UPPER PLATEN MACHINED	110115540120	110115540220	110115540208	110115540220	11011575120	110115575220	110115575208	2
2	LOWER PLATEN MACHINED	1101008002120	1101008002220	1101008002208	1101008002220	1101155232120	1101155232220	1101155232208	1
3	LOWER WRAP AROUND SHROUD ASSEMBLY	110115501	110115501	110115501	110115501	110115501	110115501	110115501	1
5	INSULATION, LOWER PLATEN	110115542	110115542	110115542	110115542	110115542	110115542	110115542	1
6	CLEVIS, LEFT HAND ASS'Y	110115503	110115503	110115503	110115503	110115503	110115503	110115503	1
7	CLEVIS, RIGHT HAND ASS'Y	110115504	110115504	110115504	110115504	110115504	110115504	110115504	1
8	SHROUD, LEFT ASS'Y	11016546454	11016546454	11016546454	11016546454	11016546454	11016546454	11016546454	1
9	SHROUD, RIGHT ASS'Y	11016546455	11016546455	11016546455	11016546455	11016546455	11016546455	11016546455	1
10	PIN, HEX STOP	11018344037	11018344037	11018344037	11018344037	11018344037	11018344037	11018344037	2
11	COVER, BOTTOM ASS'Y	110115570	110115570	110115570	110115570	110115570	110115570	110115570	1
12	INSULATION COVER, LOWER PLATEN ASS'Y	110115506	110115506	110115506	110115506	110115506	110115506	110115506	1
13	BACK COVER	110115562	110115562	110115562	110115562	110115562	110115562	110115562	1
14	INSTRUMENT HOUSING ASSEMBLY	110115511	110115511	110115511	110115511	110115511	110115511	110115511	1
15	GREASE TRAY ASSEMBLY	110115505	110115505	110115505	110115505	110115505	110115505	110115505	1
16	WIRE HARNESS (SL SERIES)	1101102050	1101102050	1101102050	1101102050	1101102050	1101102050	1101102050	1
17	TUBING PAD	110115531	110115531	110115531	110115531	110115531	110115531	110115531	2
18	HANDLE ASSEMBLY, LEFT SIDE	110115522	110115522	110115522	110115522	110115522	110115522	110115522	1
19	HANDLE ASSEMBLY, RIGHT SIDE	110115521	110115521	110115521	110115521	110115521	110115521	110115521	1
20	ADJUSTING COLLAR SPRING, HANDLE	110115528	110115528	110115528	110115528	110115528	110115528	110115528	2
21	SPRING TORSION, RIGHT, STAINLESS	1101023154R	1101023154R	1101023154R	1101023154R	1101023154R	1101023154R	1101023154R	1
22	SPRING TORSION, LEFT , STAINLESS	1101023154L	1101023154L	1101023154L	1101023154L	1101023154L	1101023154L	1101023154L	1
23	PLUNGER ASSEMBLY	110115544	110115544	110115544	110115544	110115544	110115544	110115544	2
24	MOUNTING BRACKET	110115559	110115559	110115559	110115559	110115559	110115559	110115559	1
25	LINK, TOP	110115508	110115508	110115508	110115508	110115508	110115508	110115508	2
26	PIN PIVOT ARM (REAR)	11017088866	11017088866	11017088866	11017088866	11017088866	11017088866	11017088866	2
27	PIN, PIVOT ARM (FRONT)	11017088865	11017088865	11017088865	11017088865	11017088865	11017088865	11017088865	2
28	COLLAR, CAM MACHINED	110115530	110115530	110115530	110115530	110115530	110115530	110115530	2
29	SHIM, HANDLE/CLEVIS STAINLESS	11060421	11060421	11060421	11060421	11060421	11060421	11060421	2
30	SHIM, COVER	110115557	110115557	110115557	110115557	110115557	110115557	110115557	2
31	UPPER LEVELING BRACKET	110115510	110115510	110115510	110115510	110115510	110115510	110115510	2
32	SINK, HEAT, ALUMINUM PAD	11057322	11057322	11057322	11057322	11057322	11057322	11057322	3
33	SPACER, HANDLE BUSHING RETAINER	11013283	11013283	11013283	11013283	11013283	11013283	11013283	2
34	OVERLAY-BLUE DIGITAL CONTROL (1,2,3,4)	OSL1577B	OSL1577B	OSL1577B	OSL1577B	OSL1577B	OSL1577B	OSL1577B	1
35	E-CLIP, 3/4	LCC3478	LCC3478	LCC3478	LCC3478	LCC3478	LCC3478	LCC3478	4
36	SOLID STATE RELAY 25AMP, 3-32 VDC	PL2425	PL2425	PL2425	PL2425	PL2425	PL2425	PL2425	3
37	TERMINAL BLOCK #4, DOUBLE	6014	6014	6014	6014	6014	6014	6014	2
38	TERMINAL RING #6 14-16 NICKEL PLATE, HI-TEMP	1601HT	1601HT	1601HT	1601HT	1601HT	1601HT	1601HT	3
39	TERMINAL, RING #8 14-16 GA	1604	1604	1604	1604	1604	1604	1604	9
40	JUMPER TERMINAL	J601	J601	J601	J601	J601	J601	J601	2
41	MARKER STRIP DOUBLE #4	MS6014	MS6014	MS6014	MS6014	MS6014	MS6014	MS6014	2
42	FUSE, 1 AMP	MPPF701R	MPPF701R	MPPF701R	MPPF701R	MPPF701R	MPPF701R	MPPF701R	1
43	PROBE, 2000 OHM RTD, MTG WIRE 45.5 (UPPER)	1108881101	1108881101	1108881101	1108881101	1108881101	1108881101	1108881101	1
44	PROBE, 2000 OHM RTD, MTG WIRE 15.5 (LOWER)	1108881102	1108881102	1108881102	1108881102	1108881102	1108881102	1108881102	2
45	RING, RETAINER 3/8"	11017088867	11017088867	11017088867	11017088867	11017088867	11017088867	11017088867	8
46	GRIP, HANDLE (VINYL)	110901168	110901168	110901168	110901168	110901168	110901168	110901168	2
47	INSULATOR, TRANSFORMER	1101159180	1101159180	1101159180	1101159180	1101159180	1101159180	1101159180	1
48	CLAMP, CABLE 3/8" BUNDLE	CC38	CC38	CC38	CC38	CC38	CC38	CC38	2
49	TRANSFORMER	11096975	11096975	11096975	11096975	11096975	11096975	11096975	1
50	DIGITAL CONTROL, BLUE 3 ZONE SOFTWARE REV 5.54	1101041052-B	1101041052-B	1101041052-B	1101041052-B	1101041052-B	1101041052-B	1101041052-B	1
51	FUSE HOLDER	MPPF708	MPPF708	MPPF708	MPPF708	MPPF708	MPPF708	MPPF708	1
52	STRAIN RELIEF, POWER CORD	1106546468	1106546468	1106546468	1106546468	1106546468	1106546468	1106546468	1
53	WASHER, INTERNAL LOCK #6	WLIT6	WLIT6	WLIT6	WLIT6	WLIT6	WLIT6	WLIT6	12

PARTS LIST FOR SL1577

ITEM NO.	DESCRIPTION	SL1577A 120V	SL1577CEC 220V	SL1577E 208V	SL1577C 220V	SL1577PA 120V	SL1577PCEC 220V	SL1577PE 208V	QTY.
54	WASHER, LOCK 3/8"	WL38	WL38	WL38	WL38	WL38	WL38	WL38	4
55	WASHER, SAE #6	WSAE6	WSAE6	WSAE6	WSAE6	WSAE6	WSAE6	WSAE6	3
56	WASHER, .311 OD x .150 ID x .020 THK	311150019	311150019	311150019	311150019	311150019	311150019	311150019	6
57	WASHER, CUT 5/16"	WC516	WC516	WC516	WC516	WC516	WC516	WC516	6
58	WASHER, SAE 3/8"	WSAE38	WSAE38	WSAE38	WSAE38	WSAE38	WSAE38	WSAE38	12
59	WASHER, LOCK 5/16"	WL516	WL516	WL516	WL516	WL516	WL516	WL516	10
60	WASHER, LOCK INTERNAL TOOTH 5/16"	WLIT516	WLIT516	WLIT516	WLIT516	WLIT516	WLIT516	WLIT516	4
61	WASHER, INTERNAL LOCK #8	WLIT8	WLIT8	WLIT8	WLIT8	WLIT8	WLIT8	WLIT8	3
62	WASHER, SAE #8	WSAE8	WSAE8	WSAE8	WSAE8	WSAE8	WSAE8	WSAE8	4
63	SCREW, PAN HD 8-32 x 3/8" SS, PHILLIPS	SP83238S	SP83238S	SP83238S	SP83238S	SP83238S	SP83238S	SP83238S	15
64	SCREW, PAN HD 8-32 x 3/8" PHILLIPS	SP83238	SP83238	SP83238	SP83238	SP83238	SP83238	SP83238	2
65	SCREW, SET 3/8-16 x 1/2"	SST381612	SST381612	SST381612	SST381612	SST381612	SST381612	SST381612	5
66	SCREW, PAN PHILIP HEAD 8-32 x 1"	SP8321	SP8321	SP8321	SP8321	SP8321	SP8321	SP8321	1
67	SCREW, PAN HD 8-32X1/2" PHILLIPS	SP83212	SP83212	SP83212	SP83212	SP83212	SP83212	SP83212	6
68	SCREW, PHILLIPS PAN 2-56 x 1/4"	SP25614	SP25614	SP25614	SP25614	SP25614	SP25614	SP25614	1
69	SCREW, PAN 6-32 x 3/8"	SP63238	SP63238	SP63238	SP63238	SP63238	SP63238	SP63238	2
70	SCREW, SET 5/16-18 x 3/8 SET KNURLED CUP POINT	SST5161838KN	SST5161838KN	SST5161838KN	SST5161838KN	SST5161838KN	SST5161838KN	SST5161838KN	12
71	SCREW, SET 3/8-16 1 1/2" CUP	SST3816112	SST3816112	SST3816112	SST3816112	SST3816112	SST3816112	SST3816112	4
72	SCREW, P.H. PHILLIPS, 6-32 x 1/4", NICKEL PLATED	SP63214	SP63214	SP63214	SP63214	SP63214	SP63214	SP63214	3
73	SCREW, PAN HD 6-32 X 5/8", PHILLIP	SP63258	SP63258	SP63258	SP63258	SP63258	SP63258	SP63258	4
74	SCREW,PAN HD. 8-32 x 1-1/2 SS	SP832112S	SP832112S	SP832112S	SP832112S	SP832112S	SP832112S	SP832112S	2
75	SCREW, PAN HEAD PHILLIPS .10-24X3/8 S.S.	SP102438S	SP102438S	SP102438S	SP102438S	SP102438S	SP102438S	SP102438S	12
76	SCREW, SET 3/8 16 X 1	SST38161	SST38161	SST38161	SST38161	SST38161	SST38161	SST38161	2
77	SCREW, SOCKET HD. CAP 5/16-18 x 3/4	SSH5161834	SSH5161834	SSH5161834	SSH5161834	SSH5161834	SSH5161834	SSH5161834	6
78	BOLT, HEX 5/16-18 x 1 SS	BH516181S	BH516181S	BH516181S	BH516181S	BH516181S	BH516181S	BH516181S	4
79	NUT, HEX, 6-32	NH632	NH632	NH632	NH632	NH632	NH632	NH632	12
80	NUT, HEX 3/8-16	NH3816	NH3816	NH3816	NH3816	NH3816	NH3816	NH3816	4
81	NUT, HEX 8-32	NH832	NH832	NH832	NH832	NH832	NH832	NH832	3
82	FEET, RUBBER 3/4" HEAVY DUTY BLACK	11016546469	11016546469	11016546469	11016546469	11016546469	11016546469	11016546469	4
83	BUSHING, FLANGED TEFLON 3/4" ID X 7/8" OD X 1/2" LONG X 1-1/8"	110115563	110115563	110115563	110115563	110115563	110115563	110115563	2
84	BUSHING, TEFLON, 3/4" ID X .875" OD X 1" LONG	110115541	110115541	110115541	110115541	110115541	110115541	110115541	4
85	BUSHING, FLANGED TEFLON 3/4" ID x 7/8" OD x 1"L	PG17807	PG17807	PG17807	PG17807	PG17807	PG17807	PG17807	2
86	GROMMET, INSULATION 7/8 O.D. X 3/8 I.D. THICKNESS 5/16	110115554	110115554	110115554	110115554	110115554	110115554	110115554	2
87	GROMMET, RUBBER, 3/4" ID 1.3/8" OD,1/8 PANEL THICKNESS	110103919	110103919	110103919	110103919	110103919	110103919	110103919	1
88	SPRING, DIE D-1309 (DETENT)	110115555	110115555	110115555	110115555	110115555	110115555	110115555	2
89	SPACER, NYLON, 1/4X.141X9/32, LONG	11090109	11090109	11090109	11090109	11090109	11090109	11090109	6
90	WIRE, TGGT, 14 GA. (HEATER), 250 DEGC 600V NATURAL	110069	110069	110069	110069	110069	110069	110069	19 FT
91	WIRE, TFE 14 GA. GREEN	WTFE14G	WTFE14G	WTFE14G	WTFE14G	WTFE14G	WTFE14G	WTFE14G	9.4 FT
92	TFE SHRINK TUBING 7 AGW, 2X1 SHRINK RATIO	110131	110131	110131	110131	110131	110131	110131	1 FT
93	TUBING, NON SHRINK TFE #0	110133	110133	110133	110133	110133	110133	110133	5.5 FT
94	POWER CORD	1101591174	MPPW202	1101009176	110969175	1101591174	MPPW202	1101009176	1
95	MANUAL, SL1577	MSL1577	MSL1577	MSL1577	MSL1577	MSL1577	MSL1577	MSL1577	1

VAC: 120 (220)
 AMPS: 18.3 (10.0)
 WATTS: 2200

PROLUXE
 SL1577 WIRE DIAGRAM
 SL1577P



Warranty & Return Policy

Proluxe warrants all products manufactured by it against defects in workmanship or materials from the date of purchase for a period of 1 year on parts and labor. This warranty applies to only equipment purchased and used in the United States.

Warranty period shall begin when equipment ships. Warranty travel will only be covered for 60 miles.

ALL WARRANTY SERVICE CALLS MUST BE APPROVED BY PROLUXE. IF THIS PROCEDURE IS NOT FOLLOWED, WARRANTY SERVICE WILL NOT BE COVERED. WARRANTY SERVICE WILL BE PAID ON STRAIGHT TIME, OVERTIME WILL NOT BE COVERED.

Service Calls

Contact our factory to obtain warranty service. Proluxe must issue a return authorization number, and call tag, or find the name and location of a Factory Authorized Service Center nearest you. When calling for service, please furnish the model number, serial number, and a description of the problem.

EXCLUSIONS

The warranties provided by Proluxe DO NOT apply to the following:

- Damage due to misuse, abuse, alteration, or accident.
- Improper or unauthorized repairs.
- Submerged in water.

- Damaged in shipment.
- Equipment exported to foreign countries.

Special Order Equipment and Accessories

Cannot be canceled and are not returnable unless defective within the terms of this warranty.

In no event shall Proluxe be liable for consequential damages arising out of the failure of any of its products if operated improperly or caused by normal wear or damaged by operator abuse.

Limited Lifetime Warranty on Heating Elements

If replacement is needed, Proluxe will send the new part at no charge but labor will not be covered unless the unit is still under the 1 year manufacturer warranty.

RETURNED MERCHANDISE POLICY

Should it become necessary to return any of the company's products, the following instructions must be adhered to: First, contact our customer service department for approval and a return authorization number. Please have the serial number of your item available at that time. All merchandise must be shipped freight prepaid by customer or service agency. Subject to the inspection of the product by the company, a restocking charge of 20% of the Net purchased price paid to Proluxe will be assessed.

Merchandise may not be returned for credit without prior written approval of Proluxe.

Collect shipments will not be accepted. No returns after 60 days of original shipment date on machines. Purchased parts may not be returned after 30 days. If upon inspection by Proluxe or its authorized agent it is determined the equipment has not been used in an appropriate manner, has been modified, or has not been properly maintained, or has been subject to misuse, misapplication, neglect, abuse, accident, unauthorized modification, damage during transit, delivery, fire, flood, act or war, riot or act of God, then this warranty shall be deemed null and void.

TERMS & CONDITIONS

1. Price List prices are suggested retail prices and are shown in U.S. Dollars.

2. Terms of Payment: 1% 10 days, NET 30 days.

3. New Accounts: Satisfactory credit information must be provided before open account status can be extended.

Unless agreed otherwise, all shipments will be made C.O.D., Cash in advance.

4. Pricing: Prices, specifications, model numbers, capacities and accessories are subject to change without notice.

5. Freight/Routing: Method of shipment will be determined by Proluxe unless otherwise advised by purchaser.

6. Damaged Claims: All merchandise shipped at purchaser's risk. Inspection must be made by purchaser at time goods are received. If goods are damaged, the PURCHASER shall request that the agent of the transportation company make a written notation on the proper shipping documents immediately and then file a claim for damages.

Note: Goods damaged in shipping are non-returnable.

7. Returns: Machines may not be returned after 60 days. Purchased parts may not be returned after 30 days. A restocking fee of 20% will be assessed on non-warranty returns.

8. Taxes: Prices indicated herein DO NOT include State, Federal, Local or foreign taxes or duties, nor do they include fees, permits, insurance or other levies, all of which are the responsibility of the purchaser.

9. All orders are subject to acceptance by Proluxe.

10. Possession of this price list shall not be considered an offer to sell